

DATALEC



Company Profile

Contents

Section 1:	
Organisational Capability	3
➤ Services	3
➤ Technical Capability	4
Projects	5
Section 2:	
Organisational Quality	8
➤ 2.1 - Research & Development	9
➤ 2.2 - Human Resource Management	9
➤ 2.3 - Process Indicators	9
➤ 2.4 - Outcome Indicators	9
➤ 2.5 - Culture Indicators	10
➤ 2.6 - Skill Formation	11
Section 3:	
Company Safety Policy	12
➤ 3.1 - Safety Procedures	13
➤ 3.1.1 - Prerequisites	14
➤ 3.2 - Safety Kit	14
➤ 3.3 - Housekeeping	14
➤ 3.4 - Induction & Training	15
➤ 3.5 - Licensed Operators	15
Insurances	16
Technical Licenses	17
Project Experience	18
Capability	19
Contact Details	21



Section 1

Organisational Capability

We are Leading contractors for electrical installations, ICT services, ongoing maintenance and more

Whether you're at the planning and design, construction, renovation or emergency support stage of your project, we can help.

Our services are designed to improve the efficiency of your workplace, to keep costs low and to ensure you have the most current and sustainable ICT practices in place.

With Datalec, you're a client for life because our service extends beyond the delivery of your project. From installation to maintenance and ongoing support, we ensure your electrical, data and communication capabilities run at the most efficient levels.

Electrical Services

- Project Management
- Power Reticulation
- Electrical Installations
- Lighting Integrations Systems & Energy Management
- Uninterruptible Power Supplies (UPS)
- Security / Access Control
- CCTV
- Audio Visual Services
- Dry Fire Services
- Building Maintenance
- Routine Service & Maintenance
- CAD & Schematic Documentation
- Certification & Warranty

Telecommunication Services

- Project Management
- ICT Services
- DAS – Distributed Antenna Systems
- Wi-Fi Solutions
- Managed Services
- Optical Fibre
- Carrier Works
- Structured Cabling Solutions
- Voice Infrastructure
- Design, Plan & Install
- Testing Copper & Fibre
- PABX Solutions
- CAD & Schematic Documentation
- DC Power Systems
- Certification & Warranty

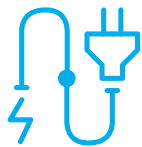
Section 1

Technical Capability

A company founded on quality, dedication, skill and innovation

For over two decades, we've provided leading edge electrical, data and security services for a range of clients.

As one of the leaders in our field, our experience covers a variety of projects including Data Centres, Hospitals, Universities, Telecoms and entertainment venues. These large-scale, often complex projects range from installations to turnkey solutions including ongoing maintenance and technical support.



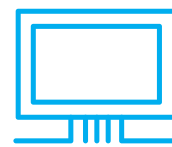
Electrical



Data



Security



Audio Visual



Our vision for the future is to accelerate our position as leaders within our industry, to deepen our relationships with valued stakeholders and to deliver diligent, innovative services, which are always client focused to provide optimum results.

Project Experience

Data Centre Sydney, NSW

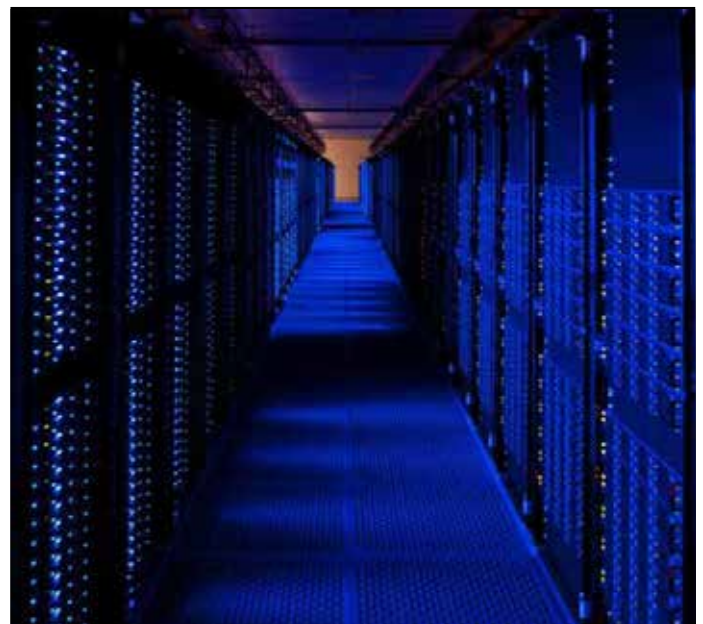


AMAZON Data Centre EPMS/UPS

Size: 15000 sqm
Budget: \$720,000
Category: Power

The aim of the project was to ensure that the Data Centre facilities in stages were both equipped with a state of the art EPMS and UPS systems to perform at 99.999999% availability or better to meet Data Centre set standards.

The project also features 5 strings of batteries associated with each of UPS systems to bolster redundancy, further complimented with a battery monitoring system designed to detect any change in battery system with full software capabilities monitored remotely.



Project Experience

Mona Vale Hospital, 18 Coronation Street, Mona Vale



Mona Vale Hospital

Size: 1500sqm
Budget: \$0.6M
Category: Health

Northern Beaches Health undertook the construction of a new building within the Mona Vale Hospital to further compliment its current services. Datalec was awarded the project to supply, install, test, commission and maintain all equipment for the complete electrical and communication services installation in accordance with the Health NSW Standards.

Mona Vale Hospital was a 12 month program.

Project Experience

Bunnings

88 Fairford Rd, Padstow



Bunnings Padstow

Size: 13300 sqm

Budget: \$2.1M

Category: Industrial

Bunnings acquired a new site at Padstow NSW to better service South West Sydney. Datalec was awarded the contract to design, supply and install the electrical and communication services in accordance with the current Bunnings standard drawings and BWCB requirements.

Bunnings Padstow was a 12 month program.

Project Experience

Westmead Hospital CASB

Hawkesbury Rd & Darcy Rd, Westmead



Westmead Hospital CASB

Size: 95559 sqm

Budget: \$7M

Category: Health

Health NSW in conjunction with Multiplex, undertook the build of a new 14 storey main hospital building as part of the expansion of the current precinct. The new building includes two new emergency departments - one for adults and one for children - along with state-of-the-art operating theatres, inpatient beds and clinical support services, providing improved health services, outcomes and experiences for patients and families.

Datalec was awarded project to supply, install, test, commission a full Commscope solution including Racks, Category 6A Cabling, Optical Fibre and all backbone cabling to support Hospital Network. There were over 20,000 copper cables installed with the addition of thousands of optical Single Mode connections and thousands Category 3 cabling connections to support voice intra network.



Project Experience

Rural Fire Services HQ

Olympic Park, NSW



Rural Fire Services HQ

Size: 9240 sqm
Budget: \$1.8M
Category: Commercial

RFS acquired a new HQ over Levels 3, 4 & 5 of 4 Murray Rose Avenue, Sydney Olympic Park with a dedicated lobby space on the ground floor.

Datalec was awarded the project to provide RFS all cabling including Panduit Category 6A structured solution, Fibre Optic Cabling, RG11 and other Voice services to complete a fully integrated solution to support RFS network including on site Data Centre.

This project commenced in August 2018 and reached practical completion in November 2018 on time and within Budget and remains a pinnacle evolution of emergency services.



Project Experience

Optus Mobile Hut Upgrades Multiple Sites



Optus Mobile Hut

Size: N/A
Budget: \$0.5M
Category: Telco

OPTUS initiated a project to upgrade the existing AC powered Air-conditioning and Damper infrastructure in Mobile Huts to DC power to see benefit in reduced costs and minimize footprint of overall power usage.

Datalec was awarded the above by ICS Industries which included project managing all works from replacing complete units, providing upgraded EEPROM to cater for DC power systems and providing updated site audit packages of upgraded sites. The project commenced in December 2018 and reached practical completion in May 2019 with a total of 200 sites completed successfully.

Project Experience

St George Hospital, Gray Street Kogarah



St George ASB Hospital Kogarah

Size: 24,000sqm
Budget: \$2.1M
Category: Health

Datalec was awarded a contract to design and complete data communications services to St George Hospital.

The project commenced in August 2016 and reached practical completion in October 2017 with a total project value of \$2,100,000.00

Scope of Work: Multi-user University of approx. 24,000 square metres over 8 floors. Approximately 5,600 R&M Cat6a F/UTP communications outlets.

Section 2

Organisational Quality



Section 2

Organisational Quality

2.1 Research & Development

As an electrical and communication contracting business, Datalec Pty Ltd has not normally been involved in research and development. We have though, on many occasions, developed specific products to solve problems in formulating solutions to customer requirements. This includes the development and manufacture of testing devices, product adaptations and implementation procedures.

2.2 Human Resource Management

Datalec Pty Ltd is a privately owned business and has developed a very stable staff and long-term staffing complement.

2.3 Process Indicators

2.3.1 Consultative mechanisms

As a close-knit organisation, our company works on an open door policy and all staff have easy access to management which promotes communication and consultation. Regular staff meetings are held for all staff down to supervisory and foreman level. There are also a number of consultative meetings where all staff members are present.

2.4 Outcome Indicators

2.4.1 Lost time due to industrial disputation

The company has not had lost time due to industrial disputes generated by Datalec staff.

2.4.2 Absenteeism

Our levels of absenteeism are low which can be substantiated from our computer records.

Section 2

Organisational Quality

2.5 Culture Indicators

2.5.1 Selection criteria/promotion planning

Great emphasis is placed on keeping a stable long-term workforce. The consequence of this policy is the need to have well planned career opportunities for our staff members. Regular reviews are conducted by management of staff members enabling opportunity for staff development and progress.

2.5.2 Equal employment opportunity plan

It is company policy that no one is judged for any reason other than the ability to perform the particular task required. All staff members have equal opportunity for promotion. There is no discrimination for issues relating to race, religion, colour, creed or gender.

2.5.3 Information sharing

All technical staff have access to information in the computer system for all project related issues. Financial information is made available to the financial management of the company. All policy and planning issues are made available to staff for comment, discussion and implementation.

2.6 Skill Formation

2.6.1 Skill formation philosophy

It is the philosophy of the company to employ multi-skilled staff members. The electrical contracting industry is essentially a multi-skilled industry whereby team members upon completion of their apprenticeships, have wide skill bases, e.g. our staff members are trained in high voltage, medium voltage and low voltage installations, power systems, structured cabling including security cabling across a range of industrial, commercial and mechanical electrical installations.

2.6.2 Skill formation policy

All staff members are encouraged to consider further training. There is both voluntary and compulsory training. Formal training is complemented by informal on the job training and is achieved by regularly rotating staff members across a wide variety of projects.

Section 2

Organisational Quality

By consistently rotating staff across a wide range of tasks, we ensure that we have a multi-skilled workforce.

2.6.3 Skill formation strategy

2.6.3.1 Analysis: determining current skills

From apprentice stage, regular reviews are conducted to determine both current skills and the need for additional training. The need for training is also determined by changes within the industry, e.g. currently, emphasis has been placed on training all staff members in various aspects of data cabling, both copper and fibre optic.

2.6.3.2 Delivery: programs to reduce skill gap

Both internal and external resources are regularly used to deliver specific programs. External resources include specialist suppliers as well as industry bodies.

2.6.3.3 Equality of opportunity

Training programs are available for all staff members. From time to time, specialist training is offered to staff members where ability and desire have been indicated, e.g. we are currently training staff internally within the company to work with UPS Power Systems including Batteries and attached DCIM Monitoring Systems..

2.6.3.4 Assessment: procedures to assess skills acquired

Regular staff reviews are conducted on both a formal and informal basis by senior managers of the company. At these reviews, both formal training and informal training will be decided upon. As part of the same review, evaluation of skills programs will be conducted to assess effectiveness of programs instituted.

2.6.3.5 Records: management information systems

Fully computerised records are maintained of all staff. These records are utilised as a means of obtaining information on skill formation.

Section 3

Company Safety Policy



Section 3

Company Safety Policy

It is a policy of Datalec management to run the business with a total adherence to procedures that result in safe working practices. Safety policy will be supplemented with detailed site instructions from time to time, but in general terms, employees will be expected to:

Strictly adhere to safe working procedures at all times.

- Use any safety equipment which is supplied for their use.
- Attend training courses from time to time when required and make every effort to absorb and implement training as received.
- Tools and equipment are expected to be maintained in good and safe working order.
- Work areas must be kept clean, orderly and in a manner conducive to safety.
- All employees will be expected to report any potentially dangerous situations to their supervisors to assist in prevention of accidents.
- Safety policy is designed to ensure that life and health are not endangered by any means.

3.1 Safety Procedures

The following procedures are to be carried out by the individual using equipment or performing work and overviewed by the foreman, supervisor and management during site inspections;

3.1.1 Prerequisites

- All employees are to be safety trained immediately after commencement with Datalec and retrained at minimum intervals of 12 months.
- No employees shall work on “LIVE” equipment

Section 3

Company Safety Policy

- All power tools are to be electrically checked each month after initial testing prior to use.
- Protective eye, ear and breathing apparatus is to be used at all times when applicable.
- All employees shall wear appropriate clothing and safety boots.

3.2 Safety Kit

A Company safety kit shall be located in the storage area and maintained at all times.

Any employee using any item shall notify the foreman or supervisor. The foreman and/or supervisor shall check the kit on a daily basis.

3.3 Safety Kit

- Ensure that all rubbish is removed from the immediate work site and deposited in the designated container at the end of each day.
- Ensure that NO rubbish/materials are stored or left in passageways or stairs.
- Ensure that safe access to emergency exits is maintained.
- Change & messing sheds shall be cleaned daily or whenever necessary. All food scraps and rubbish must be placed in bins located outside the entrances.
- The equipment must be in a safe state to allow the removal of the tag.
- The injury, or absence of the person from site, must be positively established.
- Removal of the tag can only be carried out by the Foreman in Charge or his nominated Deputy

Section 3

Company Safety Policy

3.4 Induction & Training

Prior to each employee commencing on site, that person shall attend a comprehensive safety Induction. This procedure shall be repeated on a 52 week rotation.

All employees are to be issued with these safety procedures and all safety clothing and equipment. A copy of these safety procedures shall be kept in the messing shed.

3.5 Licensed Operators

Unlicensed persons shall not operate any plant which requires the use of a license.

FOR ADDITIONAL INFORMATION /
CLARIFICATION PLEASE CONTACT
OUR OFFICE.



4.

Insurances

Public Liability

PRORISK

Policy No: PRP/UC/535450-PL

Cover Per Incident: \$20,000,000

Expiry: Certificate of currency provided

Professional Indemnity

PRORISK

Policy No: PRP/UC/535450-PI

Cover Per Incident: \$5,000,000

Expiry: Certificate of currency provided

Workers Compensation

iCARE

Policy No: 203851501

Cover: \$227,021.92

Expiry: Certificate of currency provided

Superannuation Scheme

Cbus Industry Super Policy

Industry Super Employer

Policy No. 700472802



5.

Technical Licenses

Gold Electrical Contractors License

Policy No: NSW 357195C



ACRS Licensed – A006789



Krone 15 Certified Installer



Panduit Certified Installer



Molex Certified Installer



Clipsal Certified Installer



AMP Certified Installer



Molex Certified Installer

6. Project Experience



Datalec

Electrical & Data Capability



Server Room



Mona Vale Hospital



Westmead Hospital CASB



Data Centre



Amazon EPMS/UPS



Optus Mobile Huts



101 Miller Street



RFS Headquarters

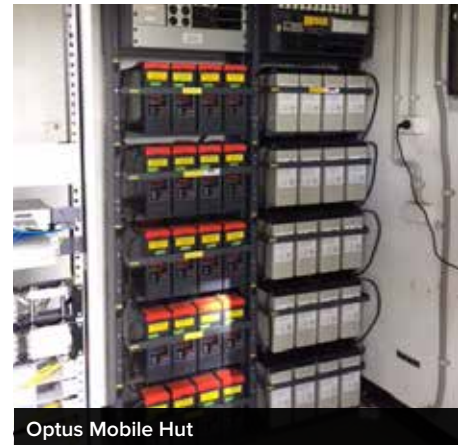


St George Hospital



St George Hospital

Electrical & Data Fitout Capability





Contact Information

Head Office

Datalec Pty Ltd
Unit B8
13-15 Forrester Street
Kingsgrove NSW 2208

T: (02) 9150 7517
F: (02) 9502 3340

Project tender request:
projects@datalec.com.au

Service & Maintenance request:
maintenance@datalec.com.au

General information request:
info@datalec.com.au

Website: www.datalec.com.au

ABN: 55 600 524 276